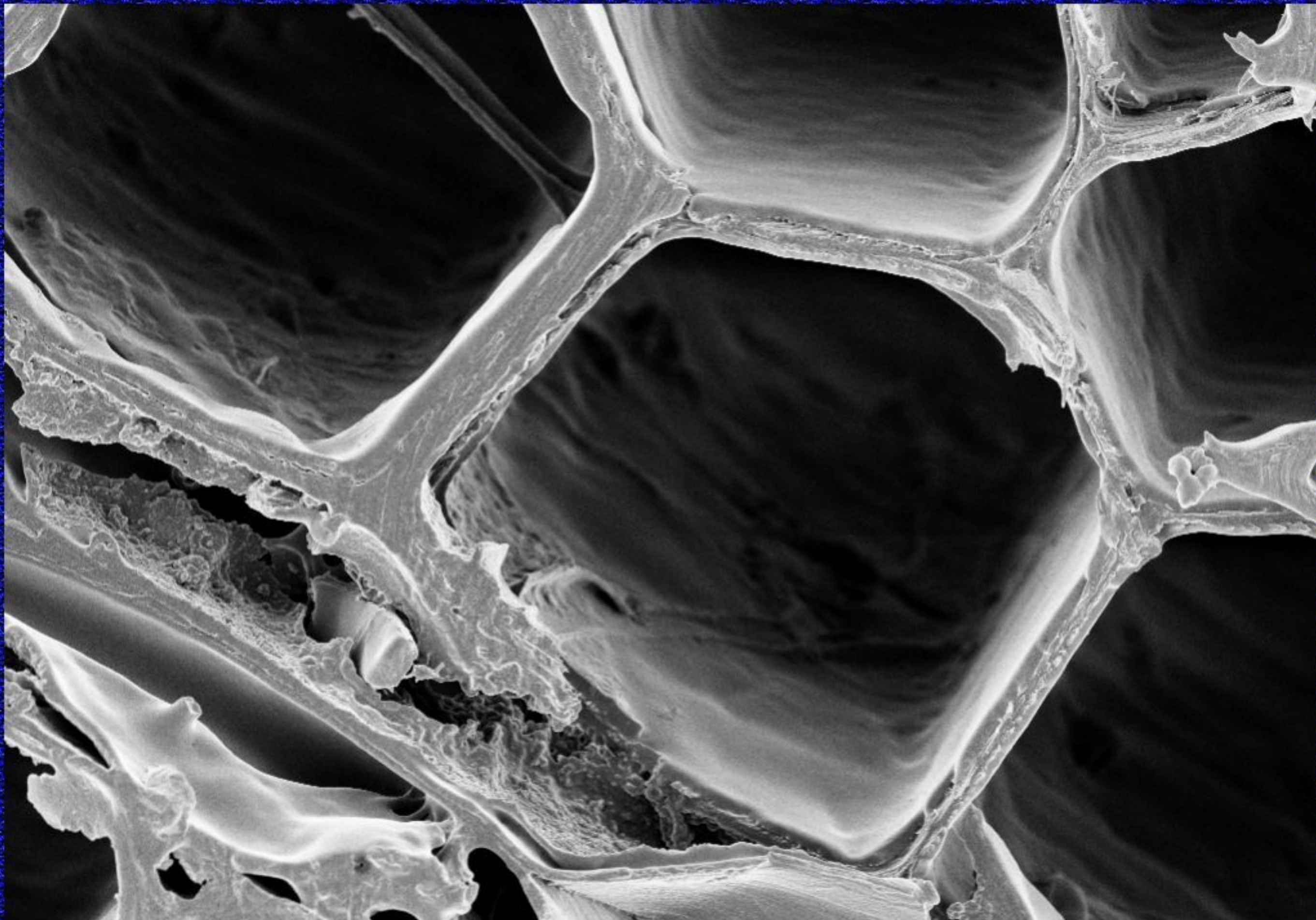


Kemi til kultur – hvordan kan vi bevare vikingeskatte?

Mikkel Christensen

**Kjemisk institutt &
Kulturhistorisk museum
ved Universitetet i Oslo**



3 μ m



EHT = 3.00 kV

WD = 5 mm

Signal A = InLens

Date :12 Oct 2010

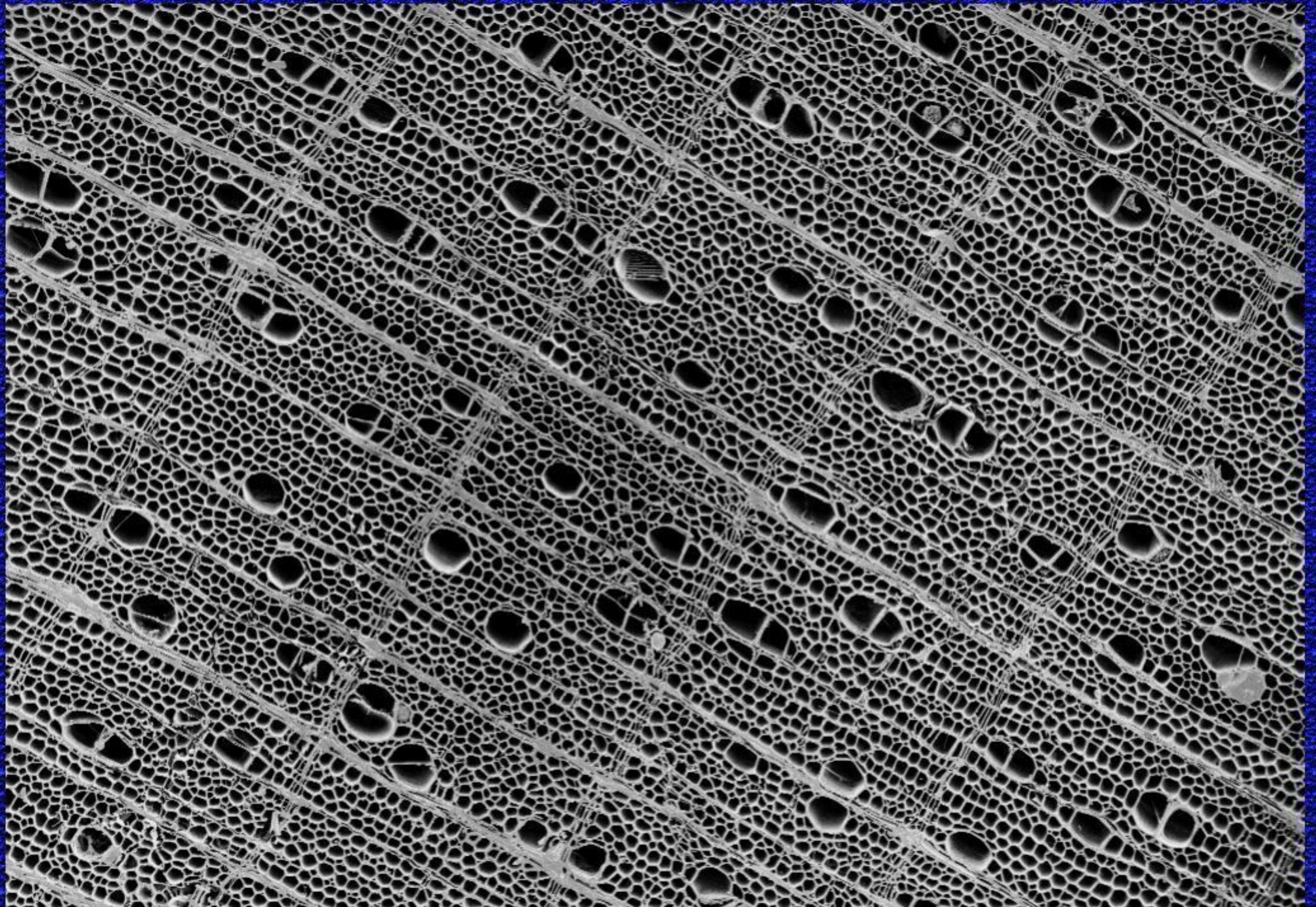


På magasin!



Arkæologisk træ





200 μ m



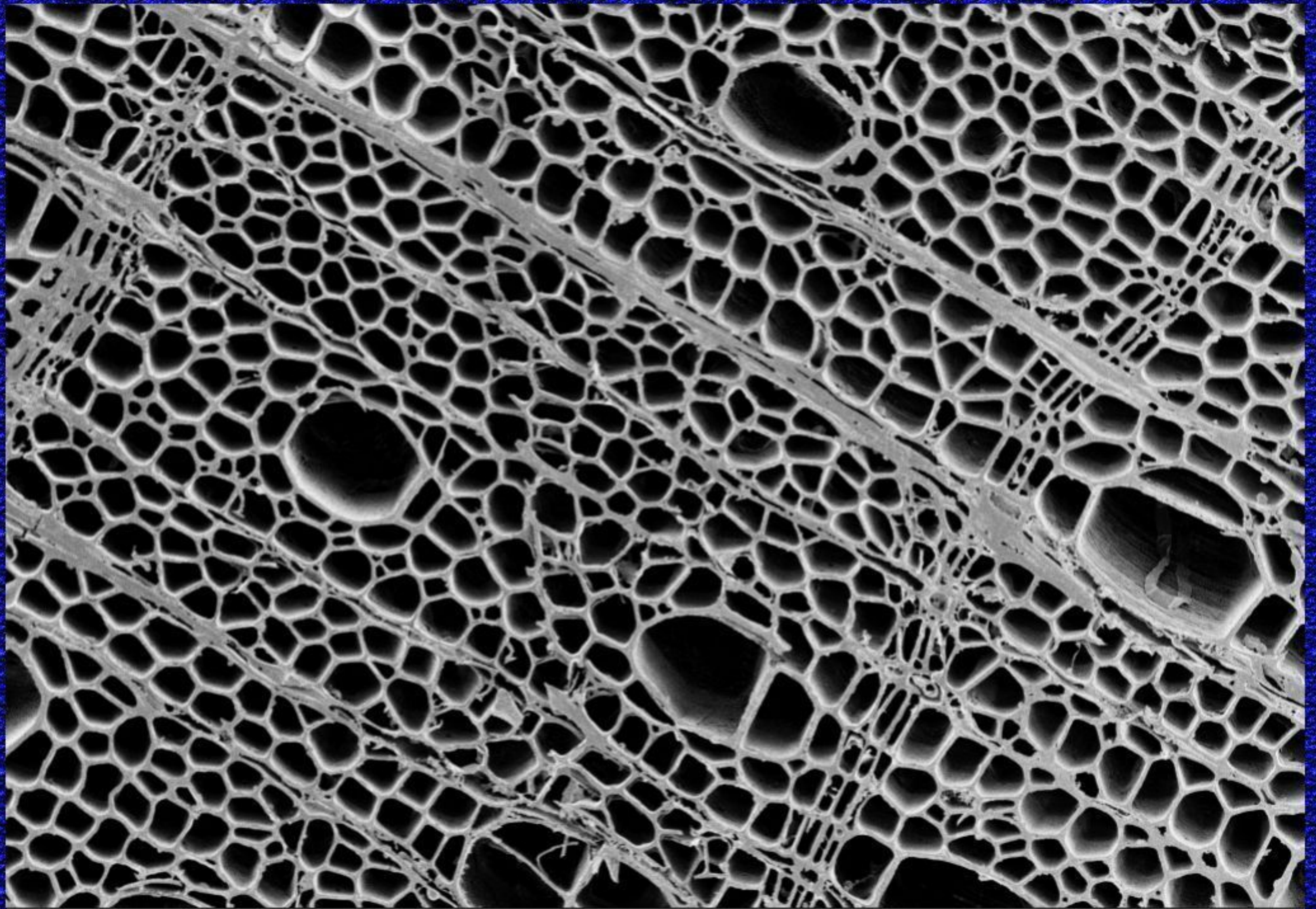
1 mm

EHT = 3.00 kV

WD = 5 mm

Signal A = InLens

Date :12 Oct 2010



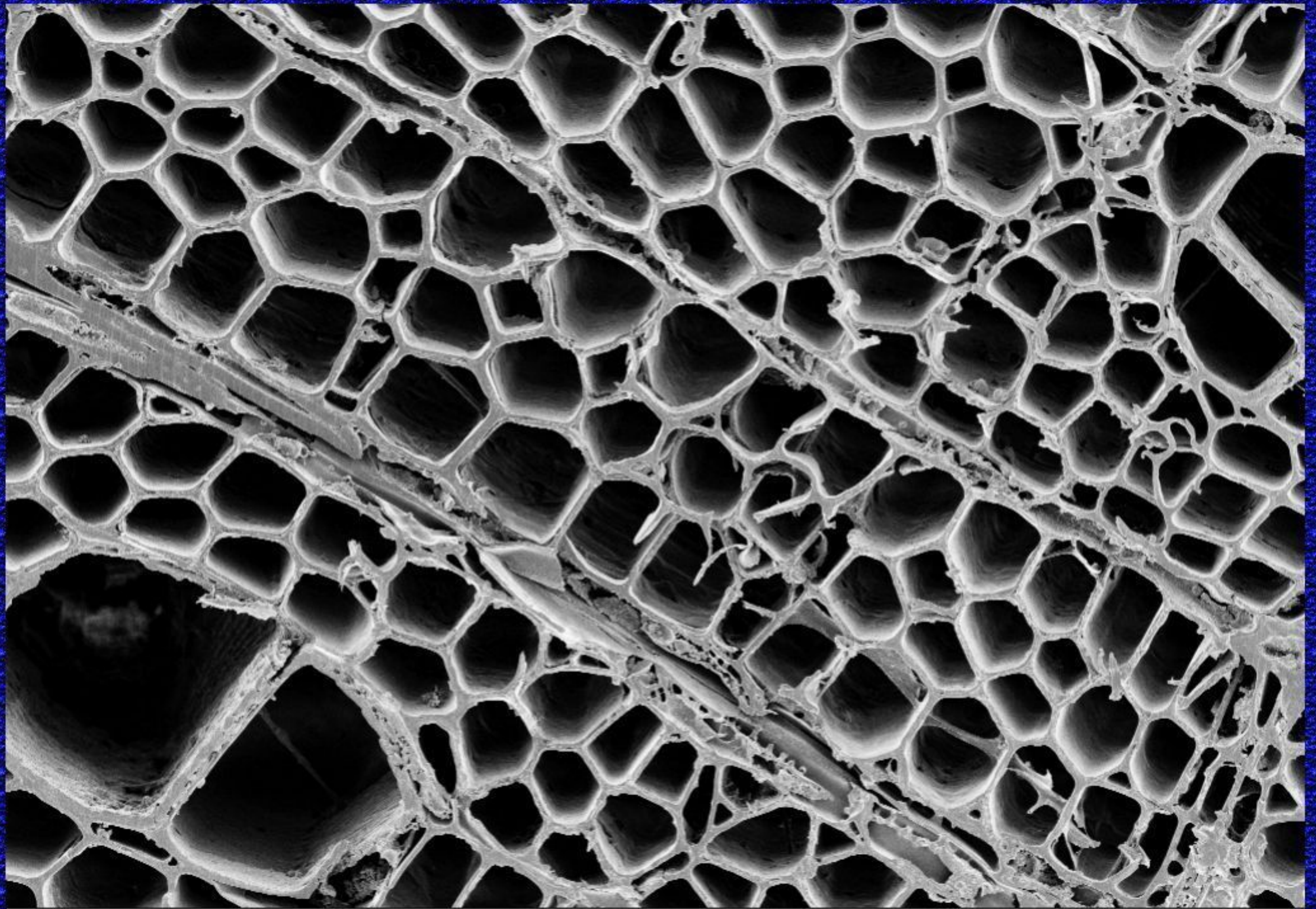
20 μ m
|
|

EHT = 3.00 kV

WD = 5 mm

Signal A = InLens

Date :12 Oct 2010



20 μ m

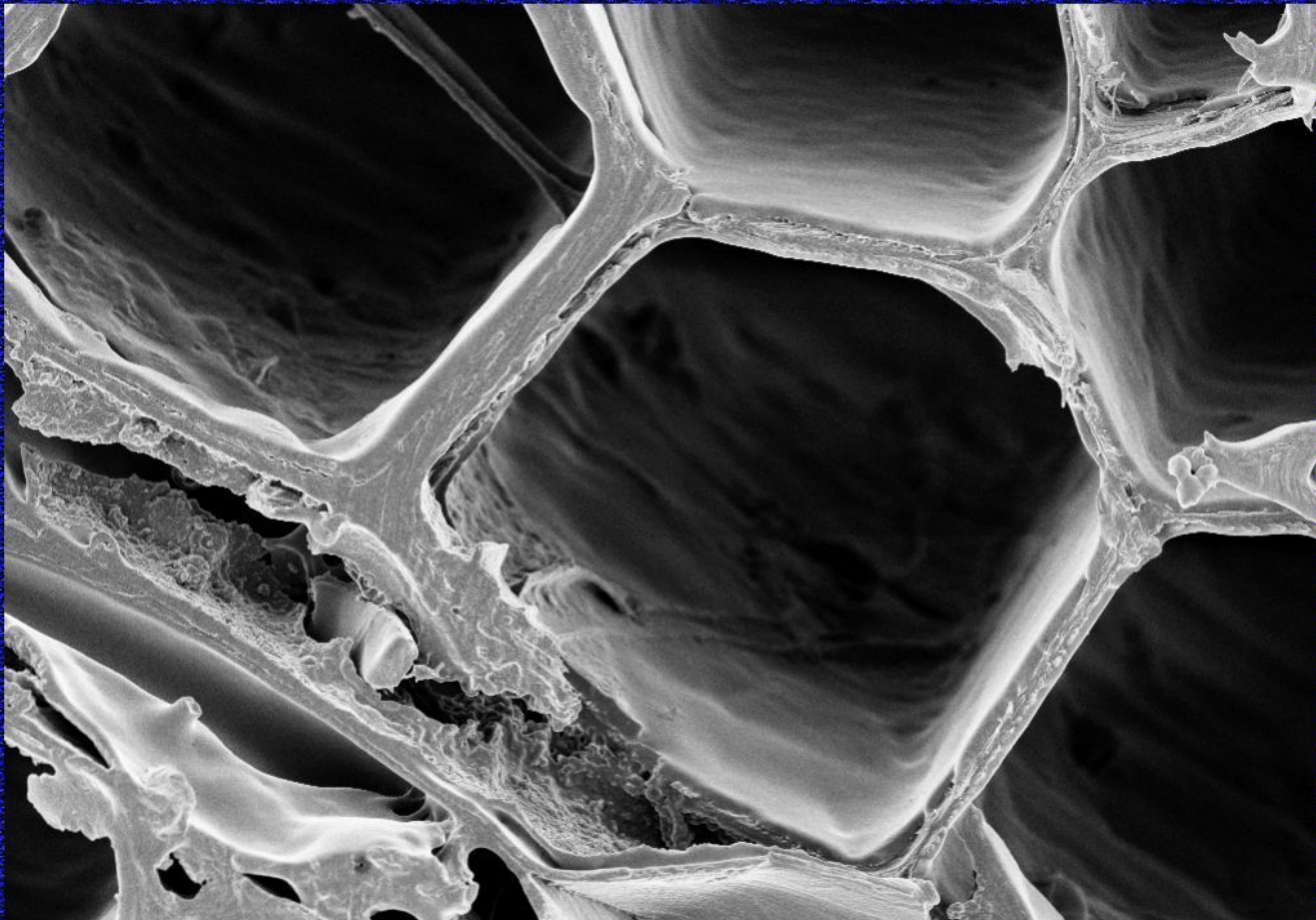


EHT = 3.00 kV

WD = 5 mm

Signal A = InLens

Date :12 Oct 2010



3 μ m

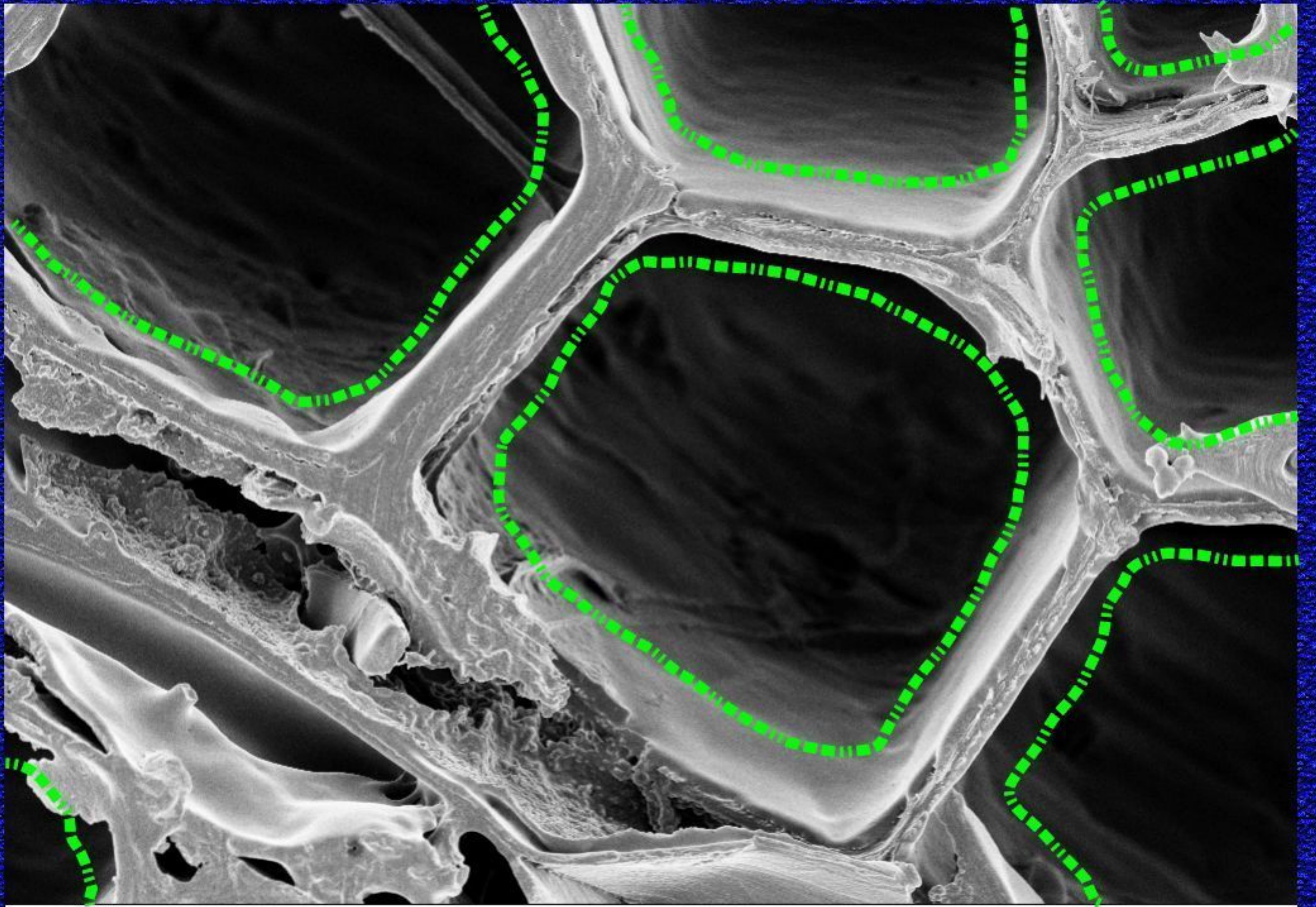


EHT = 3.00 kV

WD = 5 mm

Signal A = InLens

Date :12 Oct 2010



3 μ m

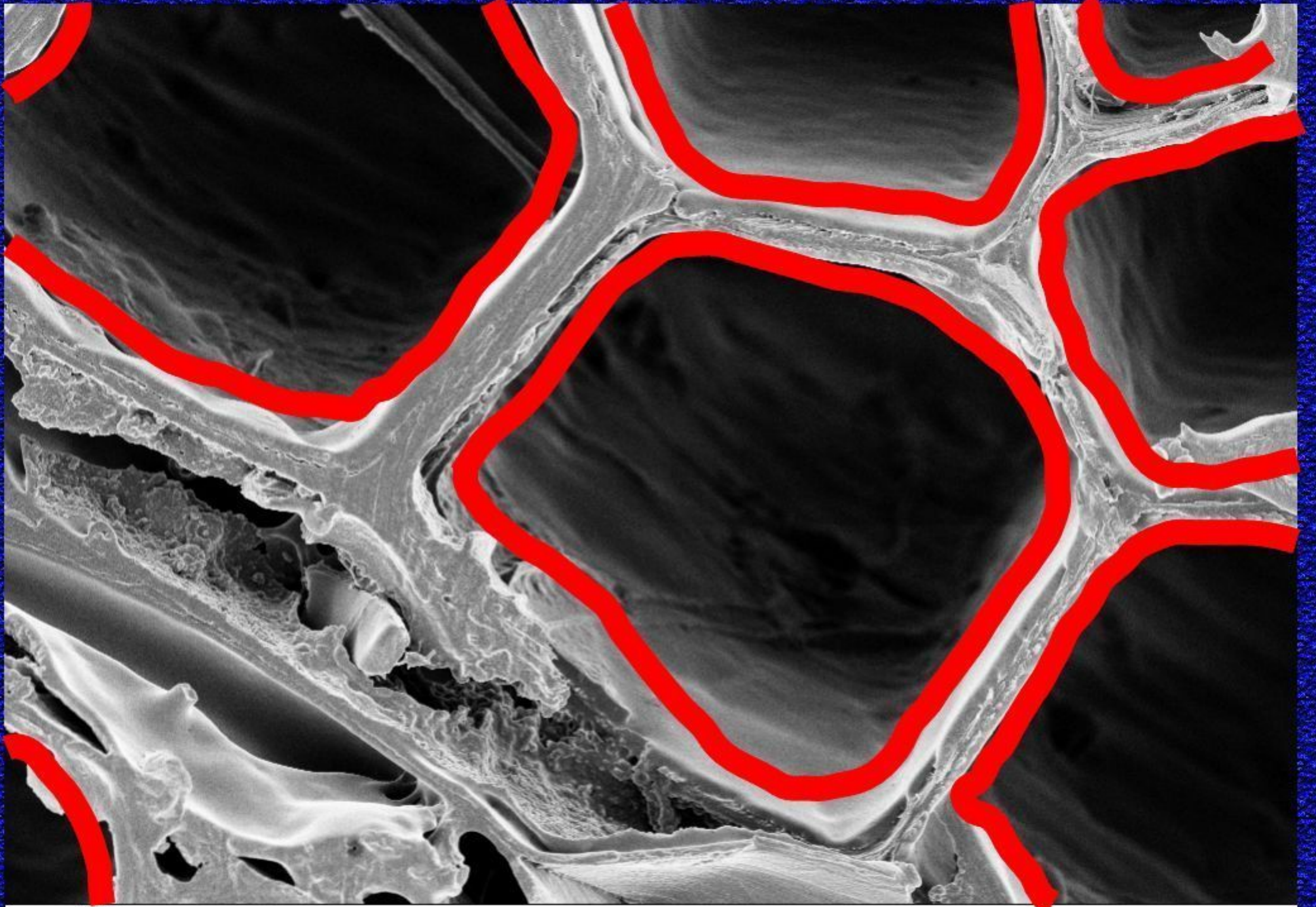


EHT = 3.00 kV

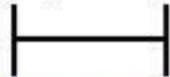
WD = 5 mm

Signal A = InLens

Date :12 Oct 2010



3 μ m

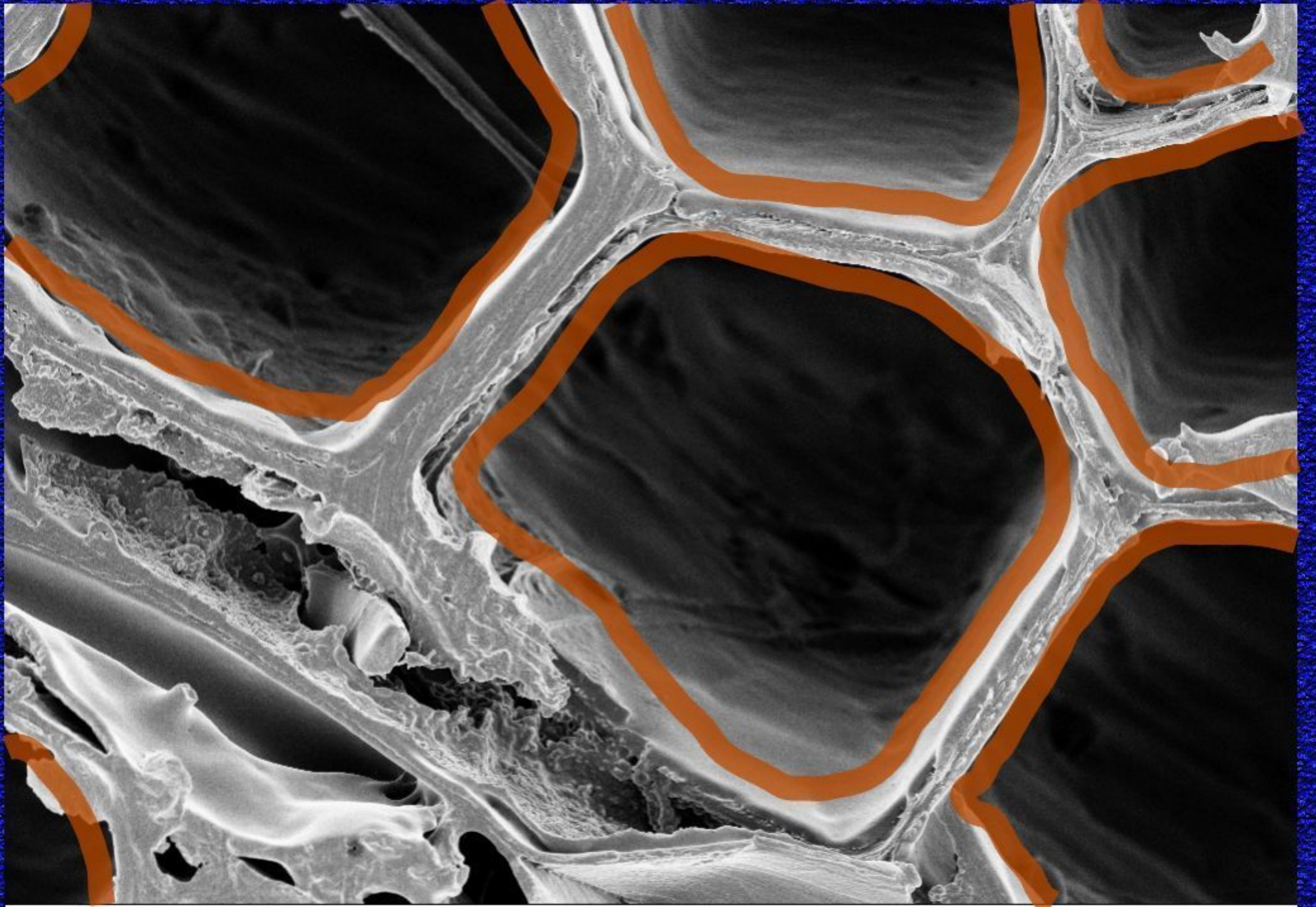


EHT = 3.00 kV

WD = 5 mm

Signal A = InLens

Date :12 Oct 2010



3 μ m

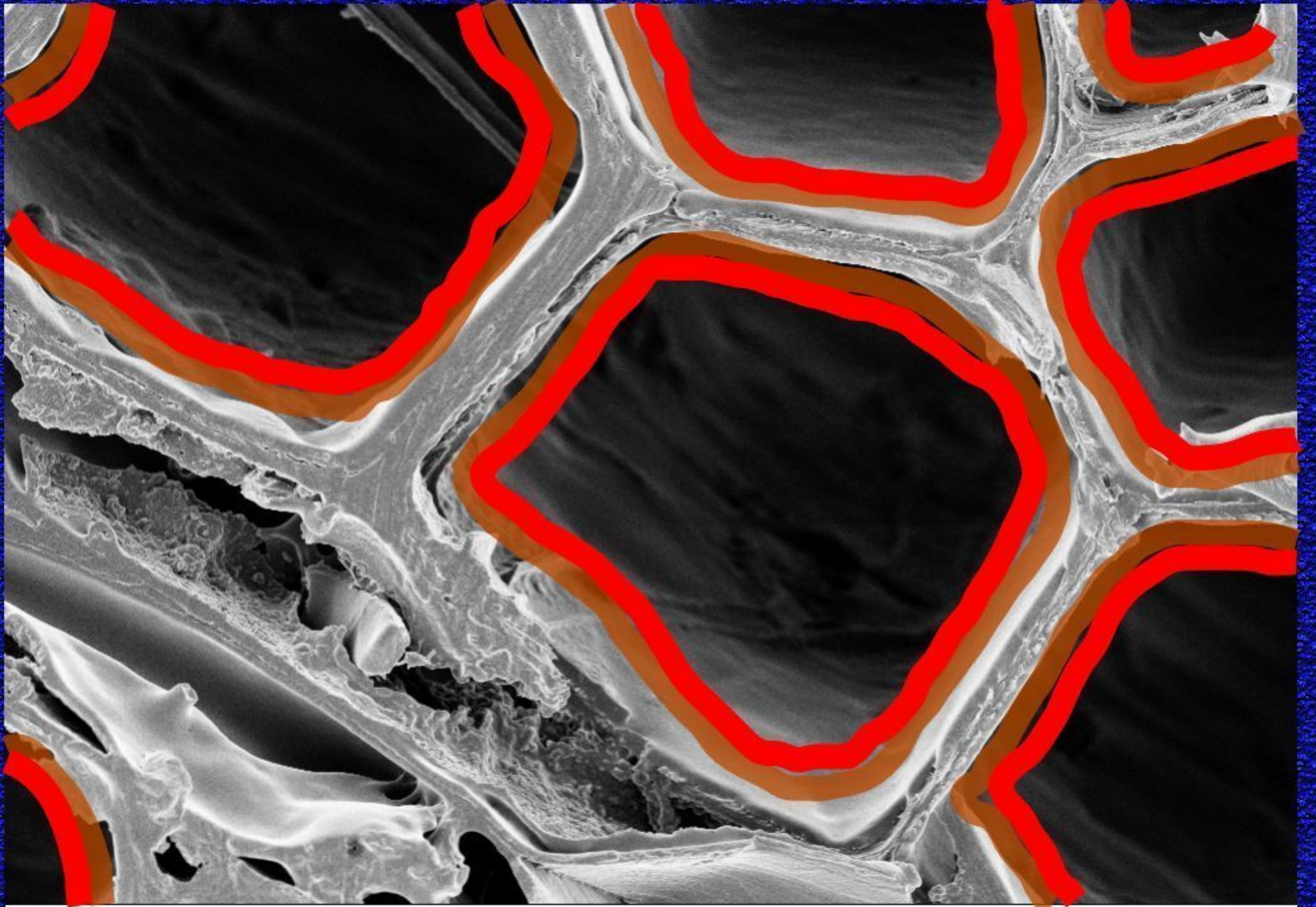


EHT = 3.00 kV

WD = 5 mm

Signal A = InLens

Date :12 Oct 2010



3 μ m



EHT = 3.00 kV

WD = 5 mm

Signal A = InLens

Date :12 Oct 2010

Cellulosekrystaller

Cellulosekrystaller

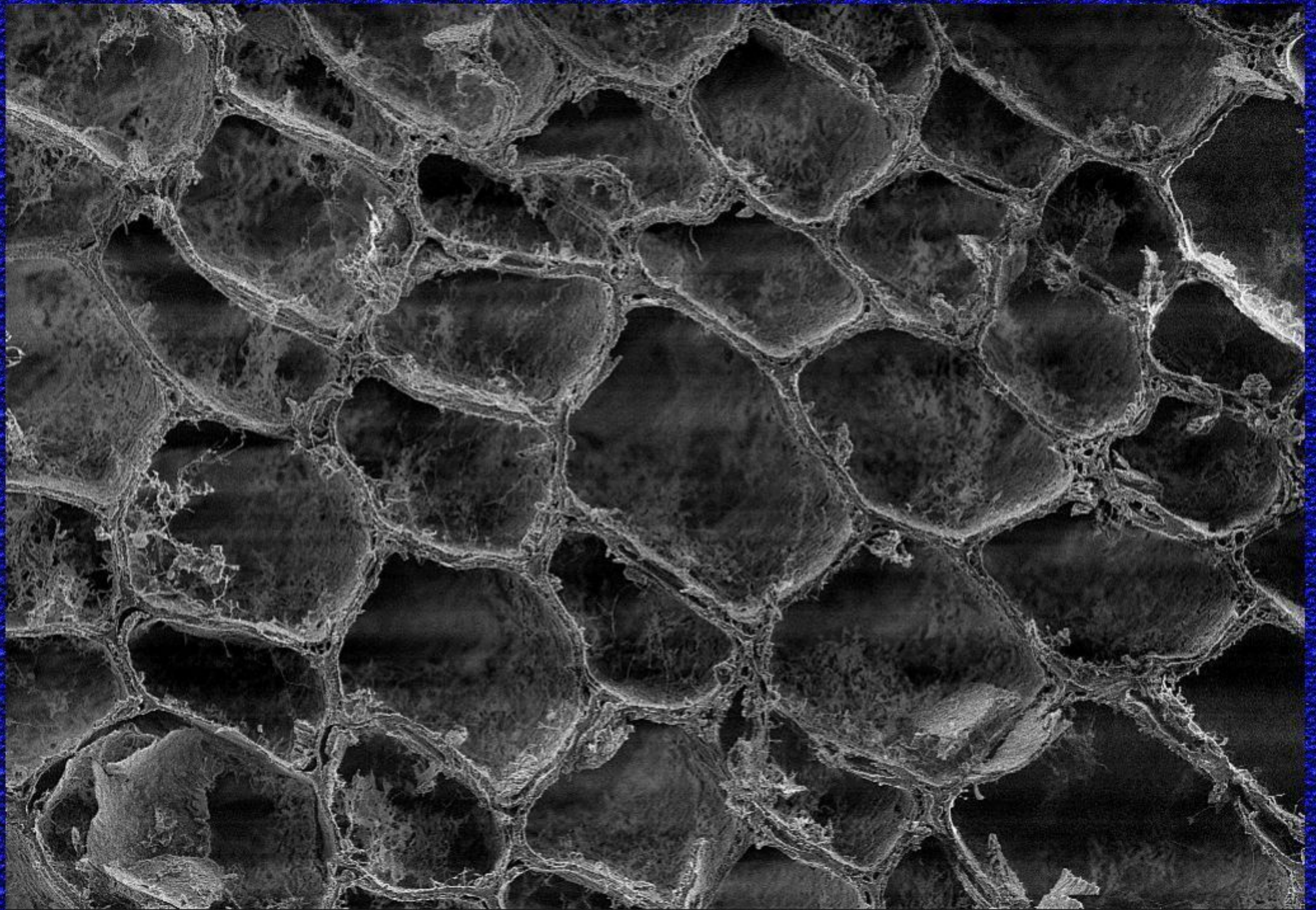
Cellulose + syre =



Cellulosekrystaller

Cellulose + syre =





30 μ m

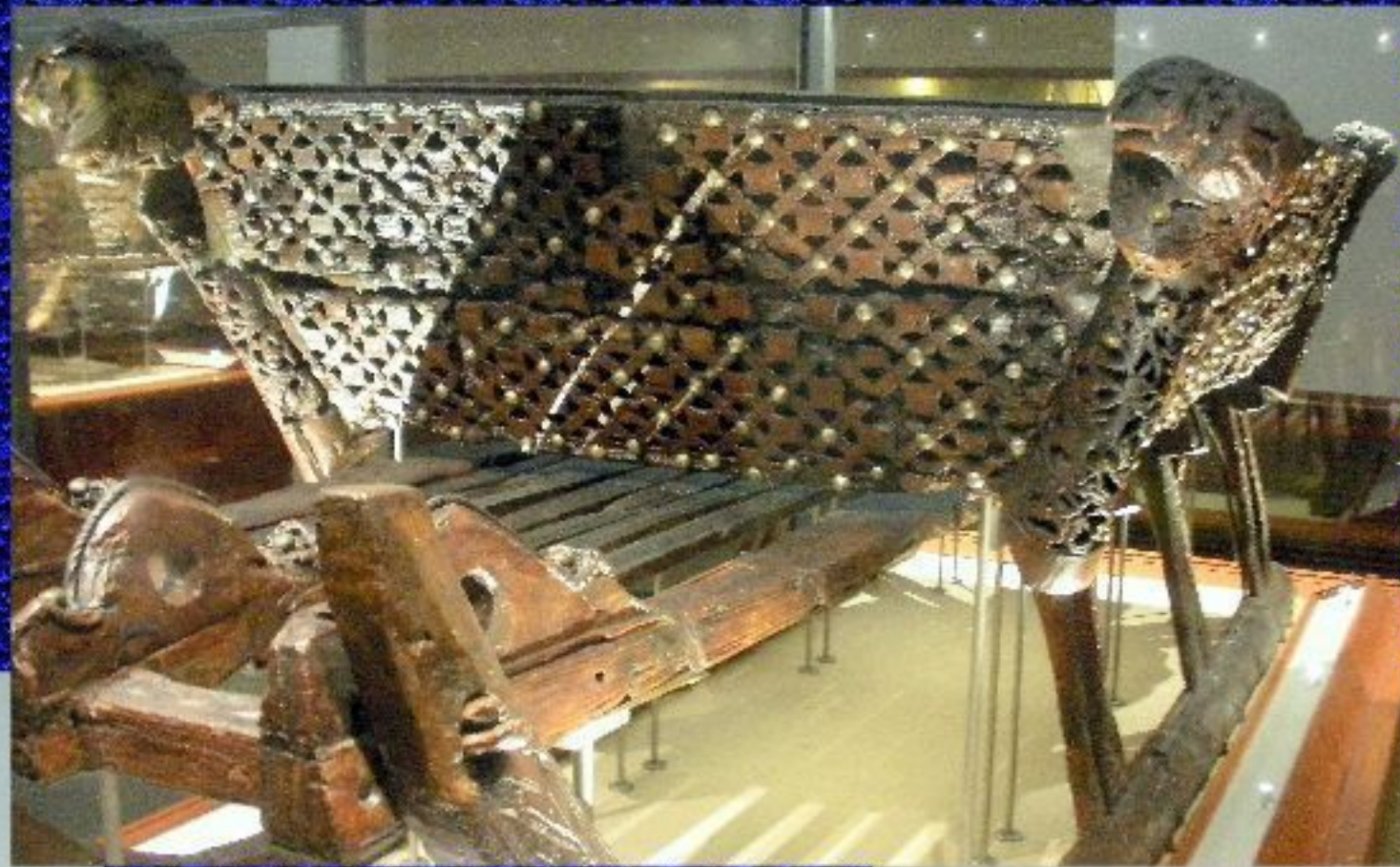


EHT = 3.00 kV

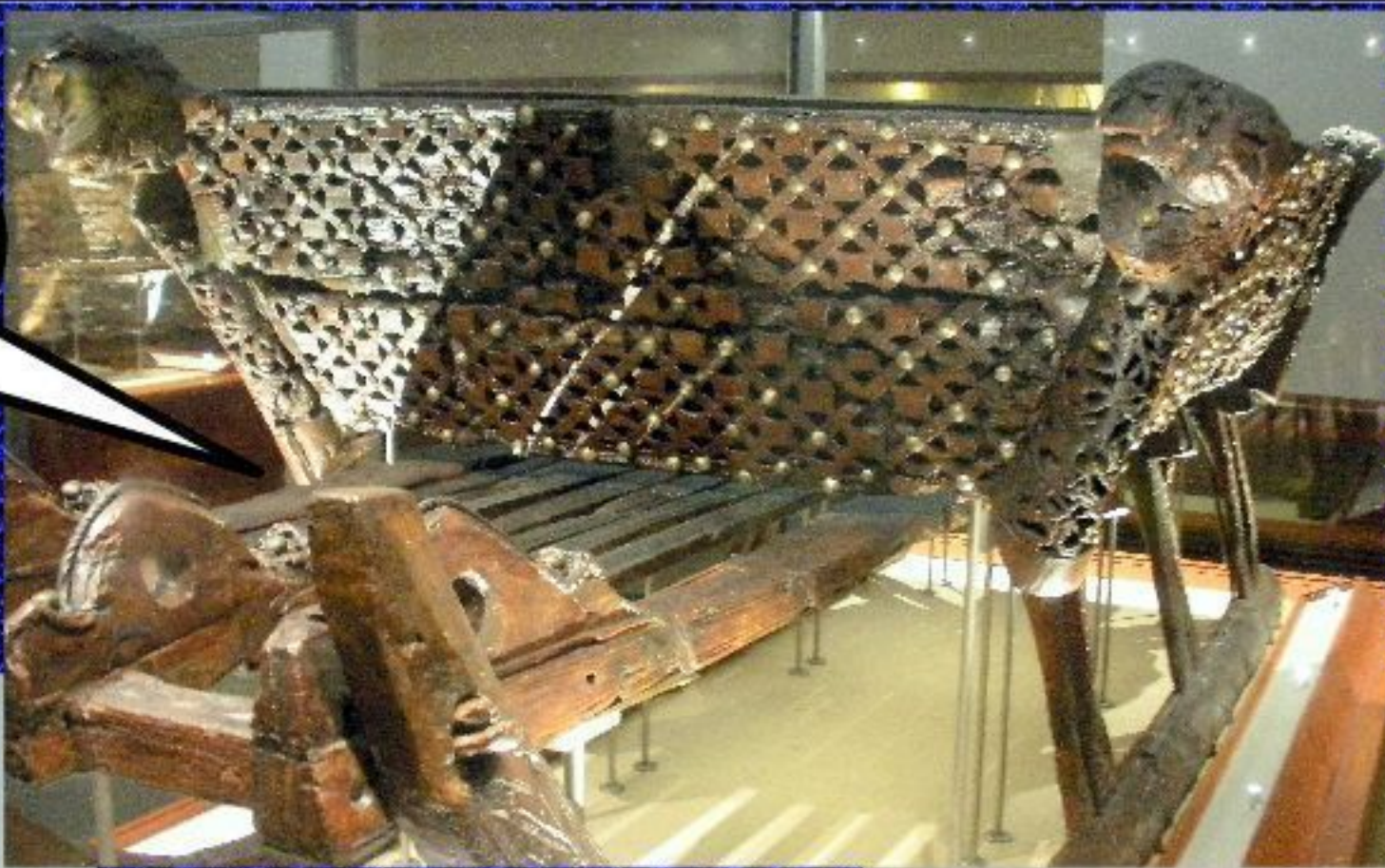
WD = 4 mm

Signal A = SE2

Date :29 Nov 2010



Jeg er sur!
Hjelp meg!



Jeg føler meg
tom innvendig!

De bråker...
Nei, jeg tror
jeg flytter!

