



Sigurd Storemoen

Haugen gård  
3620 FLESBERG

ARKIV

KULTURHISTORISK MUSEUM Universitetet i Oslo	
Saksb. Liv	Kopi 13 JULI 2005
Ark: 0631-149	
Saksnr. 07/1474	Dok.nr.: 1

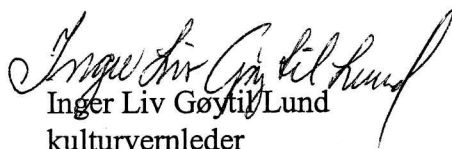
## Haugen gård - gbnr 149/7, 9 - Flesberg kommune - datering av kullprøve


Vi viser til den arkeologiske registreringen som ble utført på din eiendom i 2004.

Det ble da funnet spor etter det som synes å ha vært en smie. Her var det også en kullgrop som vi antok hadde sammenheng med smia. Her ble det sannsynligvis laget kull som ble brukt i smia. Kull fra denne kullgropa har vi nå datert for egen regning. Trearten som er brent er gran.

Dateringen er svært upresis i dette tilfelle. Her synes det å være forhold ved selve kullprøven som gjør at dateringen ikke kan være mer nøyaktig. Dateringen viser at kullgropen kan ha vært i bruk en eller flere ganger i perioden fra 1530 til 1950. Riktignok viser dateringen til fire mer avgrensede perioder: 1530 til 1550, 1630-1680, 1740-1810 og 1930 til 1950. Likevel er det såpass stor usikkerhet knyttet til denne dateringen at vi vanskelig kan uttale oss mer presist om når denne var i bruk. Den eneste måten å få avgrenset tidsperioden er å ta flere kullprøver for datering. Vi har ingen konkrete planer om det.

Med hilsen

  
Inger Liv Gøytil/Lund  
kulturvernleder

  
Lars Groseth  
arkeolog

Vedlegg:

- 1 Dateringsrapport
- 2 Vedartsanalyse

Kopi til:

Flesberg kommune 3623 LAMPELAND  
Kulturhistorisk museum, Universitetet i Oslo Postboks 6762 St.Olavspl., 0130 OSLO

POST ADRESSERES TIL AVDELINGEN - IKKE TIL ENKELTPERSONER

Postadresse  
BUSKERUD FYLKESKOMMUNE  
Fylkeshuset  
N-3020 Drammen

Besøksadresse  
Hauges gate 89  
E-postadresse  
Postmottak@bfk.no

Telefon  
32 80 85 00  
Internett  
www.bfk.no

Telefaks  
32808676

Bankkonto  
2200.07.13523  
Foretaksregisteret  
NO 964 951 373



# BETA ANALYTIC INC.

DR. M.A. TAMERS and MR. D.G. HOOD

UNIVERSITY BRANCH  
4985 S.W. 74 COURT  
MIAMI, FLORIDA, USA 33155  
PH: 305/667-5167 FAX: 305/663-0964  
E-MAIL: beta@radiocarbon.com

## REPORT OF RADIOCARBON DATING ANALYSES

Dr. Lars Groseth

Report Date: 4/4/2005

Buskerud Fylkeskommune

Material Received: 2/28/2005

Sample Data	Measured Radiocarbon Age	<sup>13</sup> C/ <sup>12</sup> C Ratio	Conventional Radiocarbon Age(*)
Beta - 202484 SAMPLE : BR.LIA KG94 ANALYSIS : Radiometric-Standard delivery MATERIAL/PRETREATMENT : (charred material): acid/alkali/acid 2 SIGMA CALIBRATION : Cal AD 990 to 1180 (Cal BP 960 to 760)	990 +/- 50 BP	-26.7 o/oo	970 +/- 50 BP
Beta - 202485 SAMPLE : GOLSKI S3 ANALYSIS : AMS-Standard delivery MATERIAL/PRETREATMENT : (charred material): acid/alkali/acid 2 SIGMA CALIBRATION : Cal BC 40 to Cal AD 130 (Cal BP 1990 to 1820)	1950 +/- 40 BP	-25.2 o/oo	1950 +/- 40 BP
Beta - 202486 SAMPLE : HAUGEN ANALYSIS : Radiometric-Standard delivery MATERIAL/PRETREATMENT : (charred material): acid/alkali/acid 2 SIGMA CALIBRATION : Cal AD 1530 to 1550 (Cal BP 420 to 400) AND Cal AD 1630 to 1680 (Cal BP 320 to 270) Cal AD 1740 to 1810 (Cal BP 210 to 140) AND Cal AD 1930 to 1950 (Cal BP 20 to 0)	210 +/- 40 BP	-24.2 o/oo	230 +/- 40 BP
Beta - 202487 SAMPLE : RGA90268 F4 ANALYSIS : AMS-Standard delivery MATERIAL/PRETREATMENT : (charred material): acid/alkali/acid 2 SIGMA CALIBRATION : Cal AD 1530 to 1560 (Cal BP 420 to 390) AND Cal AD 1630 to 1680 (Cal BP 320 to 270) Cal AD 1740 to 1800 (Cal BP 200 to 150) AND Cal AD 1930 to 1950 (Cal BP 20 to 0)	300 +/- 40 BP	-28.8 o/oo	240 +/- 40 BP
Beta - 202488 SAMPLE : RGA90277 S8 ANALYSIS : Radiometric-Standard delivery (with extended counting) MATERIAL/PRETREATMENT : (charred material): acid/alkali/acid 2 SIGMA CALIBRATION : Cal BC 790 to 370 (Cal BP 2740 to 2320)	2480 +/- 80 BP	-28.2 o/oo	2420 +/- 80 BP

Dates are reported as RCYBP (radiocarbon years before present, "present" = 1950A.D.). By International convention, the modern reference standard was 95% of the C14 content of the National Bureau of Standards' Oxalic Acid & calculated using the Libby C14 half life (5568 years). Quoted errors represent 1 standard deviation statistics (68% probability) & are based on combined measurements of the sample, background, and modern reference standards.

Measured C13/C12 ratios were calculated relative to the PDB-1 international standard and the RCYBP ages were normalized to -25 per mil. If the ratio and age are accompanied by an (\*), then the C13/C12 value was estimated, based on values typical of the material type. The quoted results are NOT calibrated to calendar years. Calibration to calendar years should be calculated using the Conventional C14 age.

# CALIBRATION OF RADIOCARBON AGE TO CALENDAR YEARS

(Variables: C13/C12=-24.2:lab. mult=1)

Laboratory number: **Beta-202486**

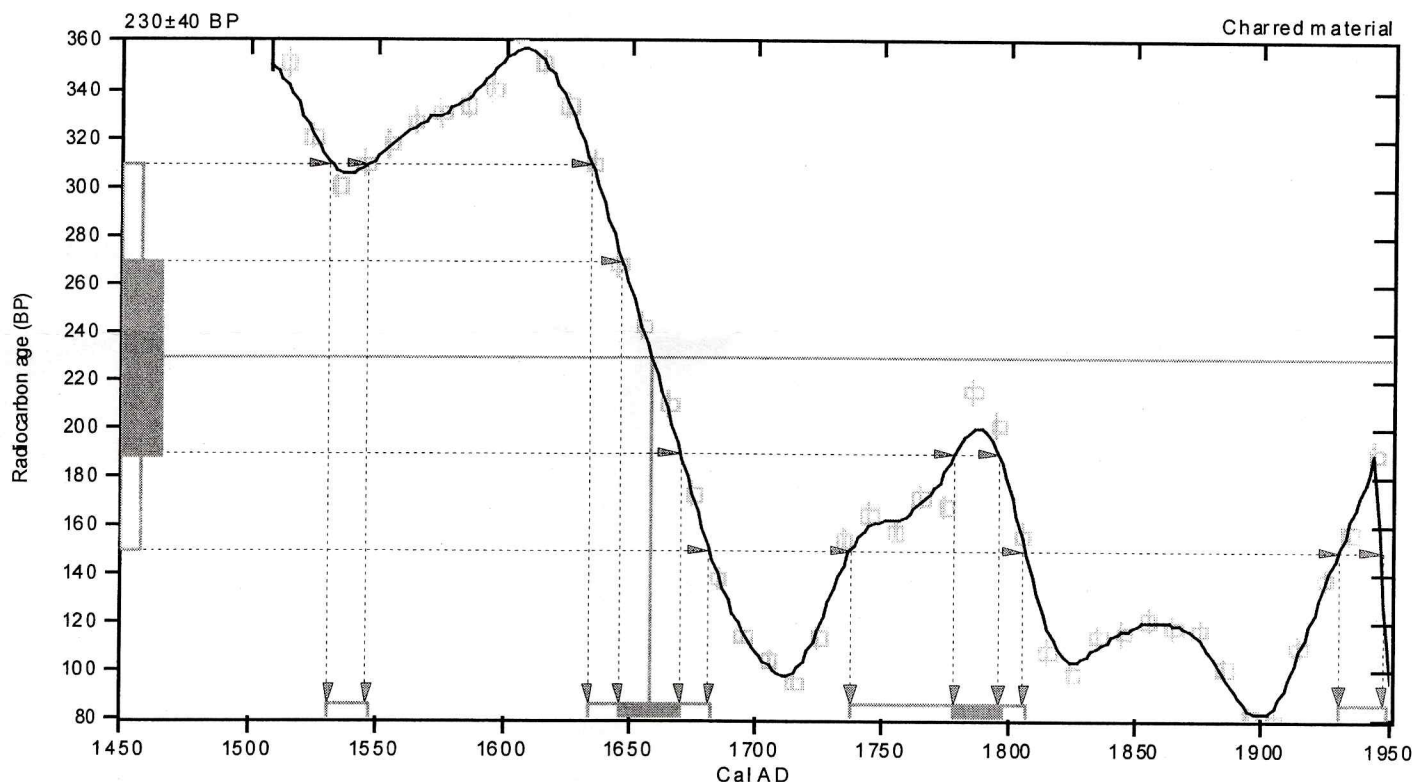
Conventional radiocarbon age: **230±40 BP**

**2 Sigma calibrated results:** Cal AD 1530 to 1550 (Cal BP 420 to 400) and  
(95% probability) Cal AD 1630 to 1680 (Cal BP 320 to 270) and  
Cal AD 1740 to 1810 (Cal BP 210 to 140) and  
Cal AD 1930 to 1950 (Cal BP 20 to 0)

Intercept data

Intercept of radiocarbon age  
with calibration curve: Cal AD 1660 (Cal BP 290)

**1 Sigma calibrated results:** Cal AD 1650 to 1670 (Cal BP 300 to 280) and  
(68% probability) Cal AD 1780 to 1800 (Cal BP 170 to 150)



## References:

### Database used

INTCAL98

### Calibration Database

### Editorial Comment

Stuiver, M., van der Plicht, H., 1998, *Radiocarbon* 40(3), p xii-xiii

### INTCAL98 Radiocarbon Age Calibration

Stuiver, M., et al., 1998, *Radiocarbon* 40(3), p1041-1083

### Mathematics

### A Simplified Approach to Calibrating C14 Dates

Talma, A. S., Vogel, J. C., 1993, *Radiocarbon* 35(2), p317-322

## Beta Analytic Radiocarbon Dating Laboratory

4985 S.W. 74th Court, Miami, Florida 33155 • Tel: (305)667-5167 • Fax: (305)663-0964 • E-Mail: beta@radiocarbon.com

Nedre Eiker kommune, reguleringsplan Steinbergkroken, kokegrop R-1, gbnr 36/1.

Det ble bestemt 40 biter. Av disse var 4 Betula (bjerk), 2 Corylus (hassel) og 34 Quercus (eik).

Gol kommune, reguleringsplan Gol skisenter, kulturlag(?) struktur 3 i sjakt 1, gbnr.27/1.

Det ble bestemt 15 biter. Alle var Betula (bjerk).

Flesberg kommune, smiekullgrop(?), Haugen, gbnr.149/7,9.

Det ble bestemt 15 biter. Alle var Picea (gran).

Kongsberg kommune, kullmile, Storeng, Hvittingfoss.

Det ble bestemt 40 biter. Alle var Picea (gran).

*Helge Inge Fløy.*