



Hans Erik Hotvedt

Fosshaugvn. 12  
3647 HVITTINGFOSS

ARKIV

KULTURHISTORISK MUSEUM Universitetet i Oslo			
Saksb.	13 JULI 2005		Kopi
Ark:	0604-14		
Saksnr.	05/14175	Dok.nr.:	1

## Storeng - gbnr 14/11 - Kongsberg kommune - datering av kullprøve fra kullmile

Vi viser til arkeologisk registrering som vi gjennomførte på din eiendom i forbindelse med bygging av landbruksvei i 2003.

Ved vår registrering ble det som kjent funnet 2 store kullmiler (se vedlagte kart). Det ble tatt ut en kullprøve som nå er datert på vår regning. Trearten som er brent er gran. Dateringen viser perioden 1660-1950. Dateringen er dessverre ikke mer presis, men den passer jo som forventet med den tidsperioden Bergverket på Kongsberg var i drift.

Med hilsen

Inger Liv Gøytal Lund  
kulturvernleder

Lars Groseth  
arkeolog

Vedlegg:

- 1 Dateringsrapport
- 2 Vedartsanalyse

Kopi til:

Kongsberg kommune  
Kulturhistorisk museum, Universitetet i Oslo  
Norsk Bergverksmuseum

Postboks 115, 3602 KONGSBERG  
Postboks 6762 St.Olavspl., 0130 OSLO  
PB. 18, 3600 KONGSBERG

POST ADRESSERES TIL AVDELINGEN - IKKE TIL ENKELTPERSONER

Postadresse  
BUSKERUD FYLKESKOMMUNE  
Fylkeshuset  
N-3020 Drammen

Besøksadresse  
Hauges gate 89  
E-postadresse  
Postmottak@bfk.no

Telefon  
32 80 85 00  
Internett  
www.bfk.no

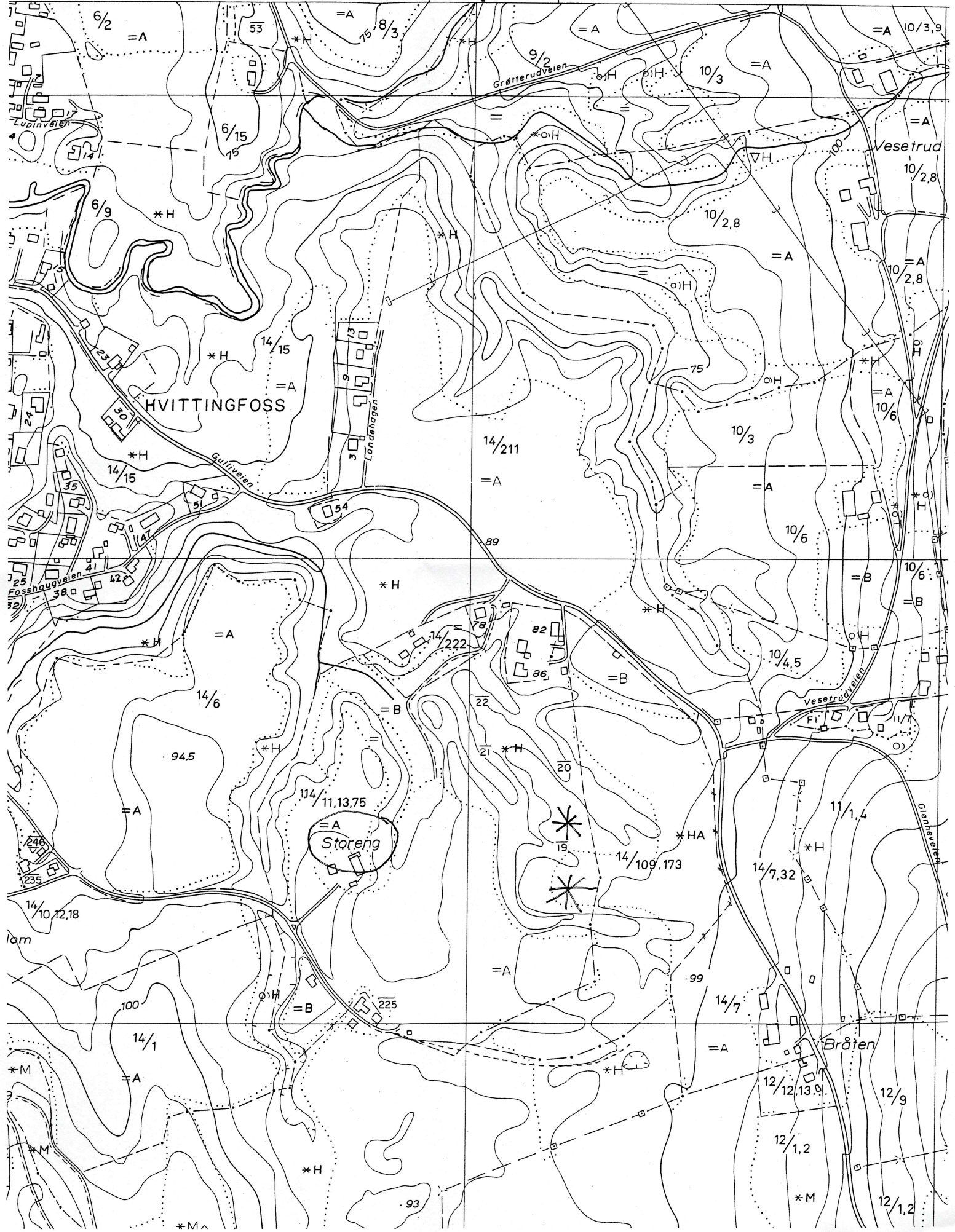
Telefaks  
32808676

Bankkonto  
2200.07.13523  
Foretaksregistre  
NO 964 951 373

=T)

CG 35-5-4

558







# BETA ANALYTIC INC.

DR. M.A. TAMERS and MR. D.G. HOOD

UNIVERSITY BRANCH  
4985 S.W. 74 COURT  
MIAMI, FLORIDA, USA 33155  
PH: 305/667-5167 FAX: 305/663-0964  
E-MAIL: beta@radiocarbon.com

## REPORT OF RADIOCARBON DATING ANALYSES

Dr. Lars Grøseth

Report Date: 4/4/2005

Sample Data	Measured Radiocarbon Age	<sup>13</sup> C/ <sup>12</sup> C Ratio	Conventional Radiocarbon Age(*)
Beta - 202489 SAMPLE : RGA90278 F1 ANALYSIS : AMS-Standard delivery MATERIAL/PRETREATMENT : (charred material): acid/alkali/acid 2 SIGMA CALIBRATION : Cal AD 240 to 420 (Cal BP 1710 to 1530)	1700 +/- 40 BP	-25.2 o/oo	1700 +/- 40 BP
Beta - 202490 SAMPLE : RGA90280 F1 ANALYSIS : AMS-Standard delivery MATERIAL/PRETREATMENT : (charred material): acid/alkali/acid 2 SIGMA CALIBRATION : Cal AD 370 to 540 (Cal BP 1580 to 1410)	1660 +/- 40 BP	-27.3 o/oo	1620 +/- 40 BP
Beta - 202491 SAMPLE : STENBERG R1 ANALYSIS : Radiometric-Standard delivery MATERIAL/PRETREATMENT : (charred material): acid/alkali/acid 2 SIGMA CALIBRATION : Cal BC 200 to Cal AD 70 (Cal BP 2150 to 1880)	2070 +/- 60 BP	-26.1 o/oo	2050 +/- 60 BP
Beta - 202492 SAMPLE : STORENG ANALYSIS : Radiometric-Standard delivery MATERIAL/PRETREATMENT : (charred material): acid/alkali/acid 2 SIGMA CALIBRATION : Cal AD 1660 to 1950 (Cal BP 290 to 0)	140 +/- 40 BP	-24.9 o/oo	140 +/- 40 BP
Beta - 202493 SAMPLE : VALSTADLIA S1 ANALYSIS : Radiometric-Standard delivery MATERIAL/PRETREATMENT : (charred material): acid/alkali/acid 2 SIGMA CALIBRATION : Cal AD 140 to 460 (Cal BP 1810 to 1480) AND Cal AD 480 to 520 (Cal BP 1470 to 1430)	1730 +/- 70 BP	-26.2 o/oo	1710 +/- 70 BP

Dates are reported as RCYBP (radiocarbon years before present, "present" = 1950A.D.). By International convention, the modern reference standard was 95% of the C14 content of the National Bureau of Standards' Oxalic Acid & calculated using the Libby C14 half life (5568 years). Quoted errors represent 1 standard deviation statistics (68% probability) & are based on combined measurements of the sample, background, and modern reference standards.

Measured C13/C12 ratios were calculated relative to the PDB-1 international standard and the RCYBP ages were normalized to -25 per mil. If the ratio and age are accompanied by an (\*), then the C13/C12 value was estimated, based on values typical of the material type. The quoted results are NOT calibrated to calendar years. Calibration to calendar years should be calculated using the Conventional C14 age.

# CALIBRATION OF RADIOCARBON AGE TO CALENDAR YEARS

(Variables: C13/C12=-24.9:lab. mult=1)

Laboratory number: **Beta-202492**

Conventional radiocarbon age: **140±40 BP**

**2 Sigma calibrated result: Cal AD 1660 to 1950 (Cal BP 290 to 0)**  
(95% probability)

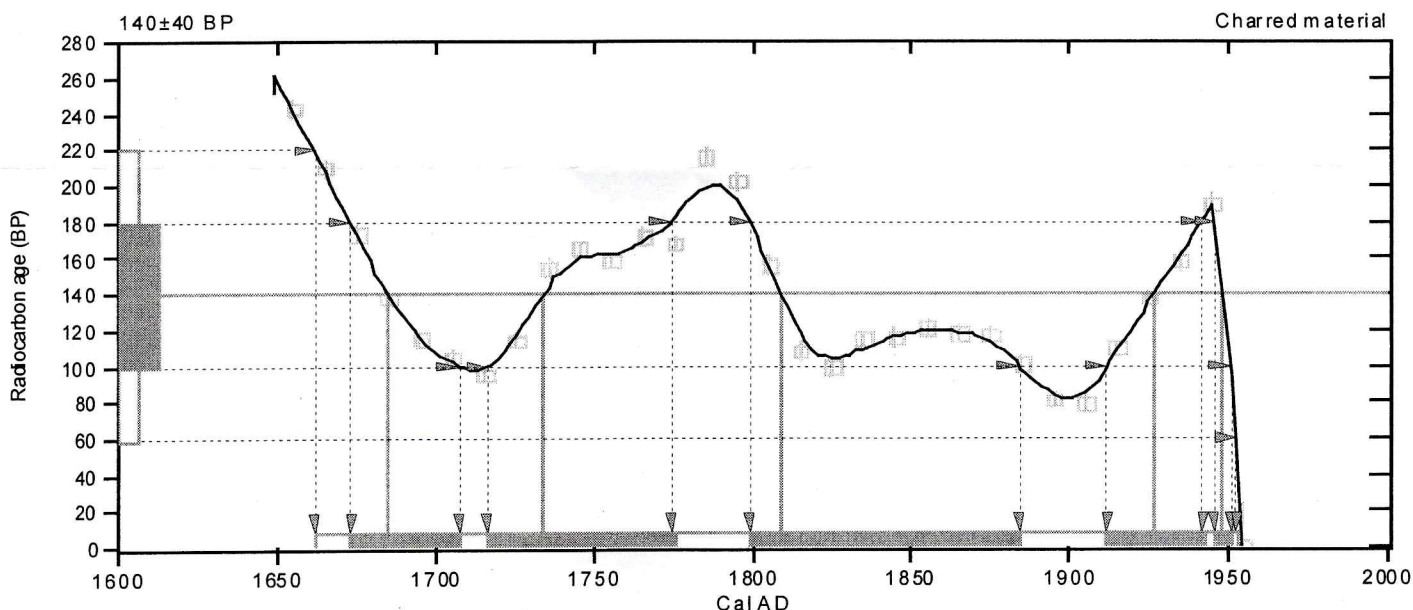
Intercept data

Intercepts of radiocarbon age  
with calibration curve:

Cal AD 1680 (Cal BP 260) and  
Cal AD 1730 (Cal BP 220) and  
Cal AD 1810 (Cal BP 140) and  
Cal AD 1930 (Cal BP 20) and  
Cal AD 1950 (Cal BP 0)

1 Sigma calibrated results:  
(68% probability)

Cal AD 1670 to 1710 (Cal BP 280 to 240) and  
Cal AD 1720 to 1770 (Cal BP 230 to 180) and  
Cal AD 1800 to 1880 (Cal BP 150 to 70) and  
Cal AD 1910 to 1940 (Cal BP 40 to 10) and  
Cal AD 1950 to 1950 (Cal BP 0 to 0)



## References:

### Database used

INTCAL 98

### Calibration Database

### Editorial Comment

Stuiver, M., van der Plicht, H., 1998, *Radiocarbon* 40(3), pxii-xiii

### INTCAL98 Radiocarbon Age Calibration

Stuiver, M., et. al., 1998, *Radiocarbon* 40(3), p1041-1083

### Mathematics

### A Simplified Approach to Calibrating C14 Dates

Talma, A. S., Vogel, J. C., 1993, *Radiocarbon* 35(2), p317-322

## Beta Analytic Radiocarbon Dating Laboratory

498 S.W. 74th Court, Miami, Florida 33155 • Tel: (305)667-5167 • Fax: (305)663-0964 • E-Mail: beta@radiocarbon.com

Nedre Eiker kommune, reguleringsplan Steinbergkroken, kokegrop R-1, gbnr 36/1.

Det ble bestemt 40 biter. Av disse var 4 Betula (bjerk), 2 Corylus (hassel) og 34 Quercus (eik).

Gol kommune, reguleringsplan Gol skisenter, kulturlag(?) struktur 3 i sjakt 1, gbnr.27/1.

Det ble bestemt 15 biter. Alle var Betula (bjerk).

Flesberg kommune, smiekullgrop(?), Haugen, gbnr.149/7,9.

Det ble bestemt 15 biter. Alle var Picea (gran).

~~X~~ Kongsberg kommune, kullmile, Storeng, Hvittingfoss.

Det ble bestemt 40 biter. Alle var Picea (gran).

Helge Inge Fløy.